

# BTP-2002NP

## PRINTER



Kitchen



Restaurants



Bar



Departmental Store



Shopping Mall



Cosmetic Shop



Convenience Store

### Features

- High-speed printing (150mm/s)
- Low noise
- Easy paper loading
- Auto-cutter
- 1M Flash
- 1~2 cash drawer
- Wall or desktop mounting

### Applications

- Retail
- Hospitality
- Grocery
- Ticketing
- ATM

[www.intellvisions.com](http://www.intellvisions.com)

**Intellvisions**<sup>TM</sup>  
Automation... Limited to Your Imagination

# PRINTER

# BTP-2002NP



**Easy paper loading**  
Open top cover, insert paper roll, close top cover and print



**Optional HERALD kitchen alarm system** Specially designed for noisy environments like kitchens



**Cover for internal power supply and cable**



**Optional interfaces**  
Modular interfaces (so called "daughter boards") include Serial, Parallel, USB, and Ethernet and WLAN which can be configured by the user.



**Spill proof cover**

## Printer

- Method Direct Thermal
- Resolution 203DPI(H) x 180 DPI(V)
- Print width Max.80mm
- Print speed 150mm/s
- Memory RAM: 128KB FLASH: 1MB
- TPH overheating protection Thermal sensor
- TPH position Micro switch
- Sensors Paper near end sensor, paper end sensor
- Drivers Windows drivers (WIN98/NT/2000/XP)
- Interface Centronics, RS232C, RS485/422, USB, Ethernet, WLAN
- Cash drawer control 1-2 Cash drawers

## Barcode Fonts Graphics

- Bar code supported UPC-A, UPC-E, EAN8, EAN13, CODE39, ITF, CODABAR, CODE128
- Fonts Font A(12 x 24), Font B(9 x17)
- Character Modification Rotate (0°, 90°, 180°, 270°),enlarges (1-6X), emphasize, underline, white/black reverse
- Graphic Printing Bitmap image downloading Direct Bitmap image print  
Download up to 6 Bitmap images into 8KB buffer  
support fast graphics print in bitmap mode

## Paper

- Paper type Continuous paper, marked paper
- Paper thickness 65±5µm
- Paper width 82.5±0.5mm, 80±0.5mm, 76±0.5mm, 69±0.5mm, 57±0.5mm
- Paper roll OD Ø83mm
- Paper cut Tear off, full cut, partial cut

## Power adaptor

- Input 100~240 VAC, 50~60Hz
- Output 24V±5% DC, 2.3 A

## Reliability

- Printer head lifetime ≥ 100Km
- Cutter lifetime 1, 500, 000 cuts (standard thermal paper, 65±5µm)

## Environment

- Operating temperature 5° C to 45° C, 20° C to 80° C RH (Non-condensed)
- Operating humidity 40° C to 55° C, 93%RH or less (Non-condensed)

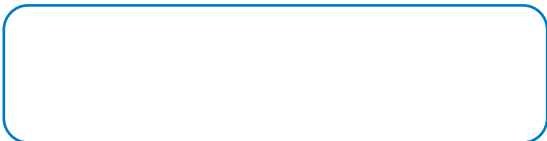
## Physical Specs

- Weight Approx.2.3kg
- Dimensions 146(W)x193(D)x144(H)mm

### INDIA - Corporate Office

INTELLVISIONS Software Limited  
303, Steel House, 24, Mahal Industrial Estate, Off Mahakali Caves Road,  
Andheri (East), Mumbai - 400 093. INDIA.  
Tel.: (+91-22) 4087 5452. Fax:(+91-22) 2687 3915.  
E-mail: printers@intellvisions.com

\* Technical specifications subject to change



# BTP-R580 PRINTER

**Professional spill-proof design and front paper exit**

Very advanced high-speed and versatile printer



Kitchen



Restaurants



Bar



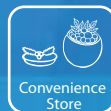
Departmental Store



Shopping Mall



Cosmetic Shop



Convenience Store

## Features

- Professional spill proof and meets with IPX1 standard
- Print Speed up to 230mm/s
- Front paper exit
- Paper roll diameter up to 100mm
- Several communication optional interfaces
- Supports marked paper
- Compatible with the HERALD kitchen alarm systems
- Internal power supply

## Applications

- Kitchen
- Retail
- Hospitality
- Logistics
- Coupon
- Lottery

[www.intellvisions.com](http://www.intellvisions.com)

**Intellvisions**<sup>TM</sup>  
Automation... Limited to Your Imagination

# PRINTER

# BTP-R580



### Full spill-proof design

The design is suitable especially in environments like kitchens and bars



### Easy paper loading

Open top cover, insert paper roll, close top cover and print



### Straight paper path for reliable printing



### Optional HERALD kitchen alarm system

Specially designed for noisy environments like kitchens



### Optional interfaces

Modular interfaces (so-called "daughter boards") include Serial, Parallel, USB, and Ethernet and WLAN which can be configured by the user.

### INDIA - Corporate Office

INTELLVISIONS Software Limited  
303, Steel House, 24, Mahal Industrial Estate, Off Mahakali Caves Road,  
Andheri (East), Mumbai - 400 093. INDIA.  
Tel.: (+91-22) 4087 5452. Fax:(+91-22) 2687 3915.  
E-mail: printers@intellvisions.com

### Print

- Print Method Direct Thermal
- Resolution 203DPI (H) x 203DPI (V)
- Print Width 80mm (Max.)
- Print Speed 230mm/s (Max.)
- Memory RAM: 2 MB FLASH: 2MB
- Drivers Windows drivers (WIN98/NT/2000/XP/Vista)

### Interface

- Interface Optional Parallel (IEEE1248), Serial (RS232C/RS485/422), USB, Ethernet, WLAN
- Cash drawer 1~2 drives

### Barcodes / Fonts / Graphics

- Barcode Supported UPC-A, UPC-E, EAN-8, EAN-13, CODABAR, CODE39, ITF, CODE128, CODE93; PDF417
- Fonts Font A: 9x9; Font B: 7x9; Kanji 16x16; GB2312(24x24)
- Character Modification Rotate (0°,90°,180°,270°), enlarges(1-6X),emphasize, underline, white/black reverse
- Image process RAM bitmap download: buffer size is 12 KB  
FLASH bitmap download: buffer size is 256 KB  
Direct bitmap print: support bitmap and execute quick print

### Detection

- Paper near end Optical sensor
- Paper end Optical sensor
- Label Optical sensor
- Top cover position Microswitch
- Print head temperature Thermistor

### Paper

- Paper Type Continuous paper, marker paper
- Paper width 82.5±0.5mm, 80±0.5mm, 57.5±0.5mm
- Paper roll OD Ø100mm(Max.)
- Paper Cut Tear off, Full cut, Partial cut

### Power

- Input 100~240VAC, 50~60Hz
- Output 24V±5% DC, 2.3A

### Reliability

- Printer head lifetime ≥150km
- Cutter lifetime 2,000,000 cuts (Receipt paper)

### Environment

- Operation condition 5°~45°,20%~90% RH(40°)
- Storage condition -40°~60°,20%~93% RH(40°)

### Physics spec.

- Dimensions 147 (W) x 205 (D) x 151 (H) mm
- Weight Approx.1.6 KG

### Standards

- Applicable standards FCC, UL, CUL, CE, CB, GS

\* Technical specifications subject to change